



X-Top for Men is the result of years of development to find a discreet and reliable solution for weak bladder control. X-Top is a sheath that covers the penis making it more discreet than traditional incontinence products with no leaks!

1

Pull the X-Top pouch over the penis as far as possible.

2

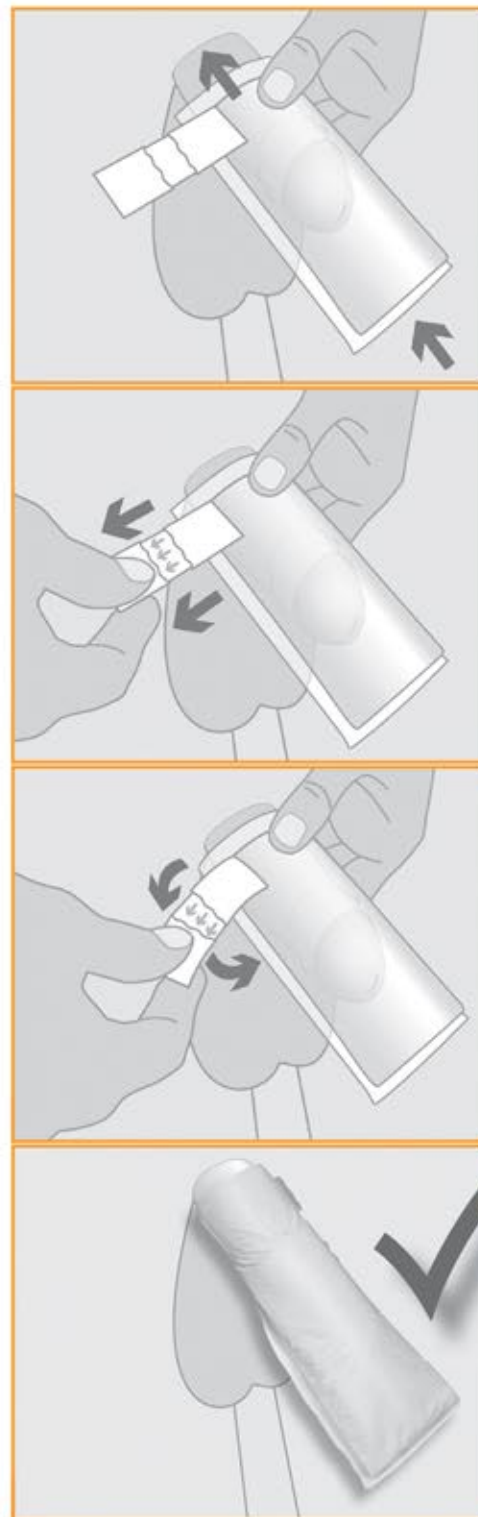
Tighten and affix the velcro closure. Close it tight so as not to slip off. The closure is adjustable so can be re-fastened as often as needed.

3

Change the X-Top when needed, but at least once a day

4

Dispose of X-Top with your regular household waste. DO NOT FLUSH.



IMPORTANT INFORMATION

Always wear close fitting underwear such as briefs or stretch/fixation pants. Do not wear loose boxers. Remember, the size of your member can change, especially with sharp changes in temperature. Regularly check and adjust your X-Top closure when necessary.