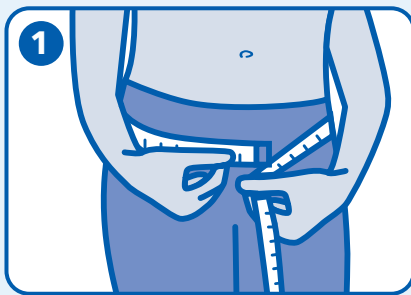




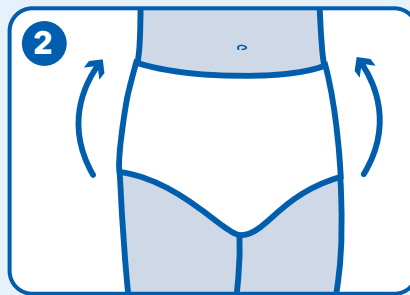
PULL-ONS

Attends Pull-Ons are soft and discreet pants that feel like underwear. The disposable pants can easily be pulled up and down and they are designed to manage light, moderate or heavy incontinence.

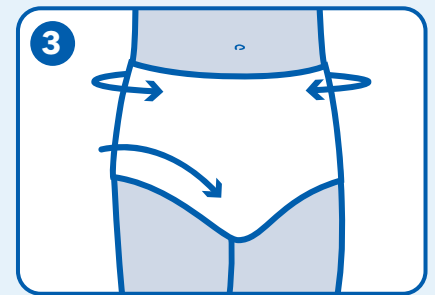
Fitting Guide



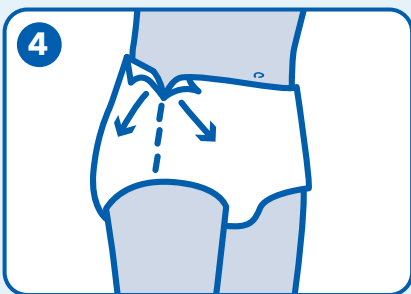
To choose the correct size, measure your hips and waist and choose the largest of the two to find your size.



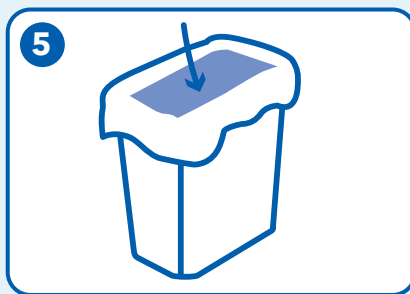
Simply pull the pants up and down like normal underwear. This can be done several times due to the product design.



The elasticity of the pants gives a comfortable and secure fit.



If the pants require changing, simply pull them down or tear them open at the seams on the side.



Then roll up the used pants and dispose of them in general waste.

PULL-ONS

Hints and Tips

Selection

- Select the size of Pull-On you require according to hip and waist size - whichever is larger.
- Select the absorbency level based on the volume of urine passed. Start by choosing a lower absorbency number before moving to a higher absorbency.
- Pull-Ons can offer effective management for people who may reject shaped pads.

Fitting

- Coloured elastics help to indicate the back of the product.

Changing

- Check the wetness indicator - if the wetness indicator has disappeared over half the length of the pad (60%) or if the product contains faeces the pad requires changing. If not the pad can be reapplied.

Disposal

- Roll up pads and dispose of as per your local authority or NHS waste policy.
- Do not flush the pad down the toilet.